

0.

Using CQG Desktop Version

CQG Desktop is a web based application that does not require downloading or installing. Simply use your preferred browser and get started within seconds.

1. Login
2. Overview and Default page
3. Widgets and Pages
4. Quotes and Symbols
5. Charts
6. Trading
7. CQG Symbols ID
8. Miscellaneous



Always available
to support you.

1.

Login

The application is available on <https://m.cqg.com/whs/login>

Enter your credentials and click on Log on.

Once successfully logged in, the main screen will appear.

Activate Live Account ▶



Enter User Name ▶



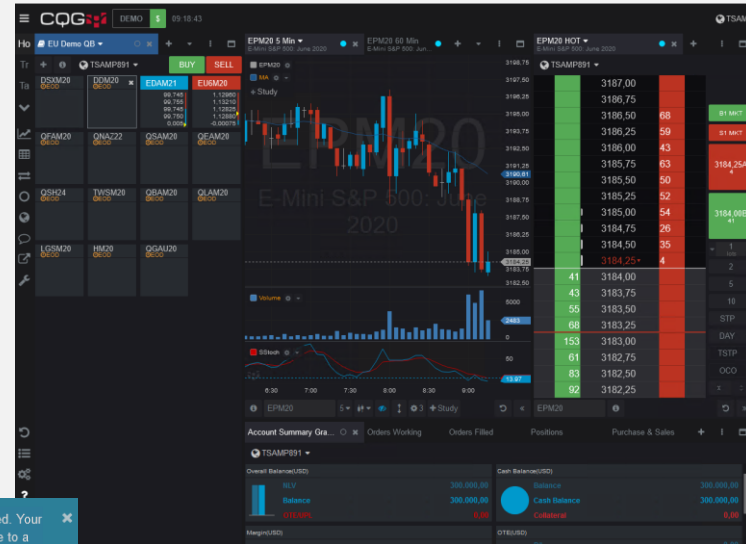
Enter Password ▶



IMPORTANT:

By logging into a 2nd session
you will be disconnected.

Your session was closed. Your session was closed due to a concurrent session.



2.

Overview and Default page

The screenshot shows the CQG Desktop interface with several annotations:

- Expand sidebar:** Points to the hamburger menu icon in the top-left corner.
- Drag tabs, add new widgets, view widget options:** Points to the tab bar at the top of the main workspace.
- Select account:** Points to the account dropdown menu in the top-right corner.
- Switch between pages, add new ones:** Points to the 'Tr' (Trade) tab in the top-left workspace area.
- Add widgets to pages:** Points to the widget palette on the left side of the workspace.
- Place and track your orders:** Points to the order book table on the right side of the workspace.
- Define personal preferences:** Points to the user profile icon in the bottom-left corner.
- Account summary:** Points to the 'Account Summary' widget at the bottom of the workspace.

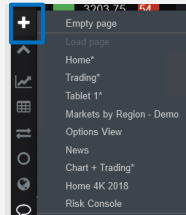
The interface displays a central chart for 'E-Mini S&P 500, June 2020' with a candlestick view and a volume bar below it. To the right is an order book for 'TSAMP891' with columns for price, quantity, and order type. At the bottom, the 'Account Summary' widget shows overall balance, cash balance, and margin information.

3.

Widgets and Pages

Widgets are individual windows with special functionality.
Widgets can be added to pages. Pages can be saved as layout.

Use existing pages or add new page

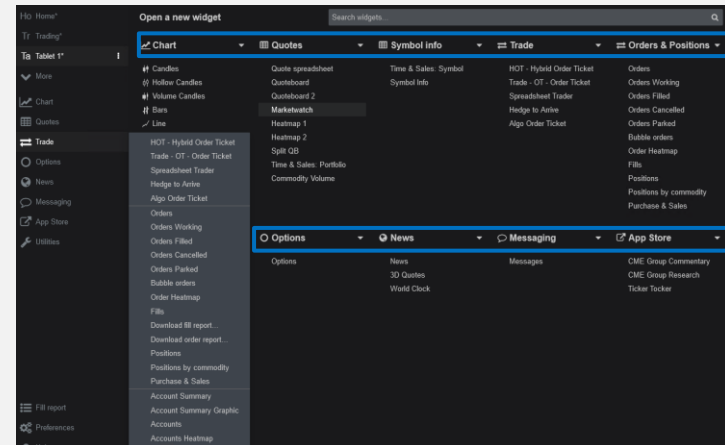


Access widgets from the left bar

New widget will appear next to the active tab

Drag and drop a widget tab to move the widget to another location

Open a new page and get an overview of all widgets: Chart, Quotes, Symbol info, Trade, Orders&Positions, Accounts, Options, News, Messaging

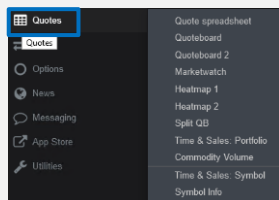


4.

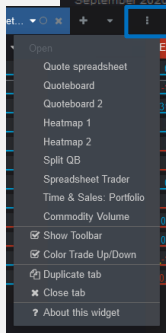
Quotes and Symbols (1/3)

Symbols and their quotes are organized in lists. Different styles can be applied for these lists.

Use an existing style for quote windows



Customize your quote window



Example: Quote Spreadsheet ▼

Symbol	T	Δ T	Δ T%	Δ T%
CLEN20 Crude Light (Globex) July 2020	36,46 ▼	0,20	0,55	
EPU20 E-Mini S&P 500: September 2020	3017,50	-6,25	-0,21	
ENQU20 E-mini NASDAQ-100	9658,00	2,00	0,02	
YMU20 E-mini Dow (S&I) September 2020	20211,00	2,00	0,01	

Example: Market Watch

CLEN20	36,50 ▲	0,24
EPU20	3021,00	-2,75
ENQU20	9661,50 ▲	29,25
YMU20	25346 B	-52
ZCEN20	328'0	-2'0
ZSEN20	868'4	-2'6
CLEN20	27,65	0,15
EPU20	501'6	-0'2
ENQU20	329'2	0'120
YMU20	177'180 ▼	0'120
ZCEN20	325'4	0'025
ZSEN20	138'260	0'025
CLEN20	1726,2 B	-11,1
EPU20	17,380 A	-0,100

Example: Quoteboard

CLEN20	EPU20	ENQU20	YMU20	ZCEN20
38,03	2983,25	9527,00	25042	329'2
36,54	3021,75	9665,25	25337	330'0
34,36	2923,75	9388,25	24409	325'4
36,50	3021,00	9684,25	25335	327'6
0,24	-2,75	32,00	-63	-2'2
ZSEN20	ZLEN20	ZWAN20	USAU20	TYAU20
870'4	27,40	499'6	177'110	138'265
871'6	27,67	503'6	178'140	139'030
884'2	27,01	497'4	177'090	138'235
888'6	27,65	501'6	177'200	138'255
-2'4	0,15	-0'2	0'140	0'020
GCEQ20	SIEN20			
1740,7	17,560			
1743,8	17,630			
1706,2	17,015			
1727,5	17,385			
-9,8	-0,095			

5.

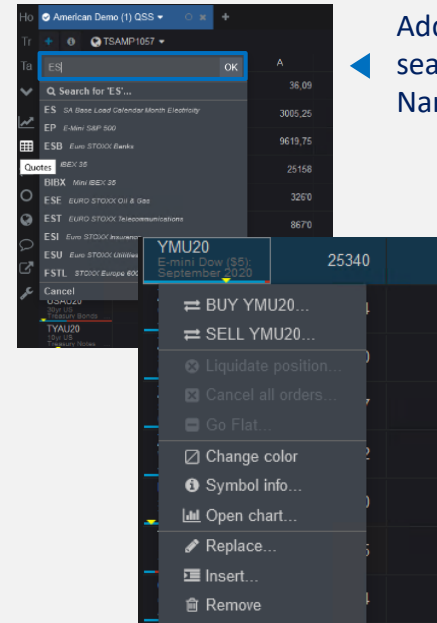
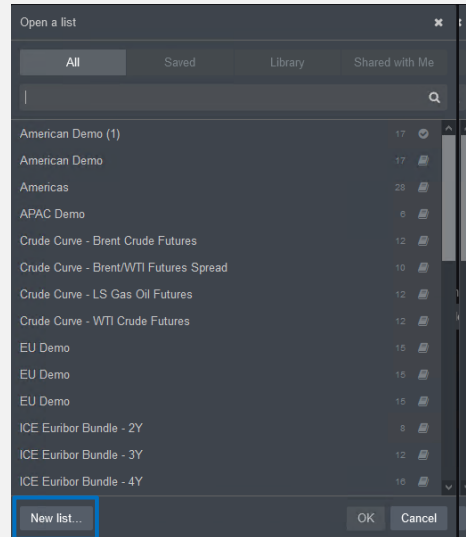
Quotes and Symbols (2/3)

Symbols and their quotes are organized in lists. Different styles can be applied for these lists.

You have selected a quote style

The window for the symbol lists opens immediately

Use a predefined list or create a new list



Add new symbols by searching for Symbol-ID, Name etc.

With a right click on a symbol you get more functions and more options to customize

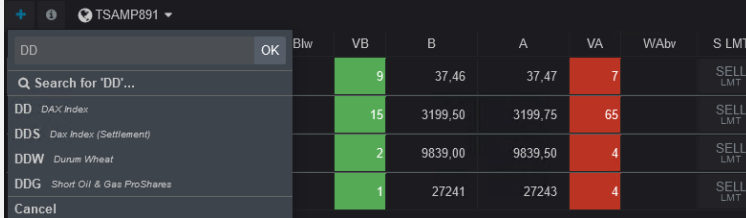
6.

Quotes and Symbols (3/3)

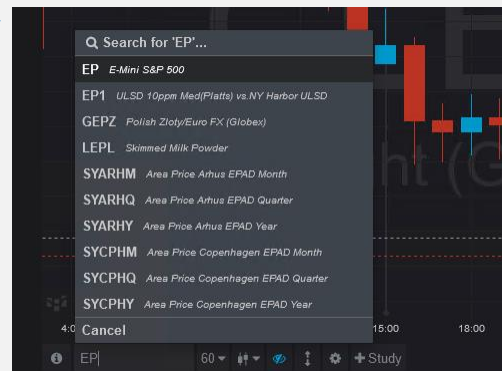
When adding a new chart or HOT widget, the last selected symbol will be used to populate the chart or HOT.

Once you have a widget/chart on the page, you can change the symbol using the entry field in the toolbar

You can search for an exchange symbol, a name of a commodity, or a CQG symbol in the entry field



	Blw	VB	B	A	VA	WAbv	S LMT
DD		9	37,46	37,47	7		SELL LMT
DD DAX Index		15	3199,50	3199,75	65		SELL LMT
DDS Dax Index (Settlement)							
DDW Durum Wheat		2	9839,00	9839,50	4		SELL LMT
DDG Short Oil & Gas ProShares		1	27241	27243	4		SELL LMT

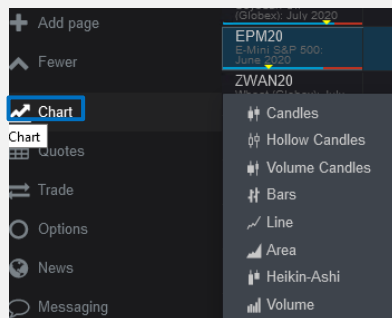


7.

Charts

CQG provides a number of charting options, all offering maximum flexibility that allows you to set up charts just the way you like.

Activate a symbol, click on Chart and chose the chart type



Right mouse click into the chart and configure your preferences



Use tools from the tool bar like lines, cross hair, text etc.

Modify contract, time frame, chart type, study and other settings

8.

Trading 1/2 – e.g. HOT (Hybrit Order Ticket)

CQG offers a selection of order entry and order management applications that suite a variety of trading styles.

Place Orders by Drag & Drop the price into ASK or BID column
A pop up shows you the order specification. To confirm click on “Place order”

Or use the buttons below the orderbook to define order type, amount and other parameters

Afterwards orders are visible in the ASK / BID column and in the widget “Orders working”

Account	Status	B/S	Qty	UnFid...	Symbol	Ord P	Type	LMT P	DUR	Place T	#
TSAMP891	Working	SELL	1	1	EPM20	3209.00	LMT		DAY	09:45:31	1109
TSAMP891	Working	BUY	1	1	EPM20	3208.00	STP		DAY	09:48:05	1109

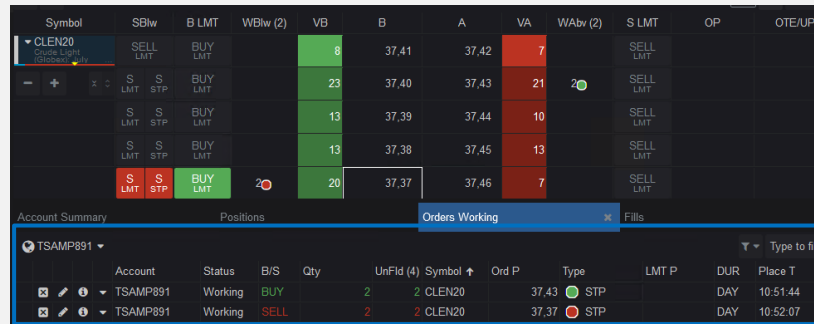
9.

Trading 2/2 – e.g. Spreadsheet Trader

CQG offers a selection of order entry and order management applications that suite a variety of trading styles.

Expand the information via “-/+” to get more order book details. ▶

Click on a price and use BUY/SELL or drag & drop the price to place an order.



◀ Positions and Orders are shown in the widgets Positions, Orders etc.

10.

CQG Symbols ID

Please note that CQG has its own symbols which differ to those of their underlying exchange. Below you will find a list of the most actively traded instruments. (Eg. DAX JUNE 20 = DDM20)

Contract name	CQG Symbol	Month	Code
FDAX	DD	January	F
EURO STOXX 50 Index Futures	DSX	February	G
CAC 40 Index Future	PIL	March	H
Euro-BUND	DB	April	J
Euro-BOBL	DL	May	K
E-mini S&P 500 Index	EP	June	M
E-mini NASDAQ 100 Index	ENQ	July	N
Mini Dow Jones \$5 Index	YM	August	Q
EUR/USD Futures	EU6	September	U
Light Sweet Crude Oil	NQM	October	V
Gold Futures	GCE	November	X
British Pound/USD	BP6	December	Z

To know the CQG symbol of the underlying, please use:

<http://help.cqg.com/fcm/symbols.xlsx>

To know the symbol for the month, please use the table on the left.

11.

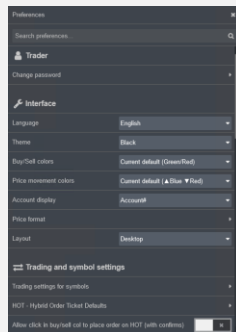
Miscellaneous

Discover the advantage of using individual preferences and reporting options.

The configuration of multiple preferences allow a full personalized way to use the application, e.g. password, authentication, layout, orders, notifications etc.



Always available to support you.



Use the direct access to the Fill Report with details about time, type etc. The order info can be printed and mailed.

To explore all the functionalities in each different widget, simply click on “About this widget” and follow the guidelines or use the general Help “?”

? About this widget